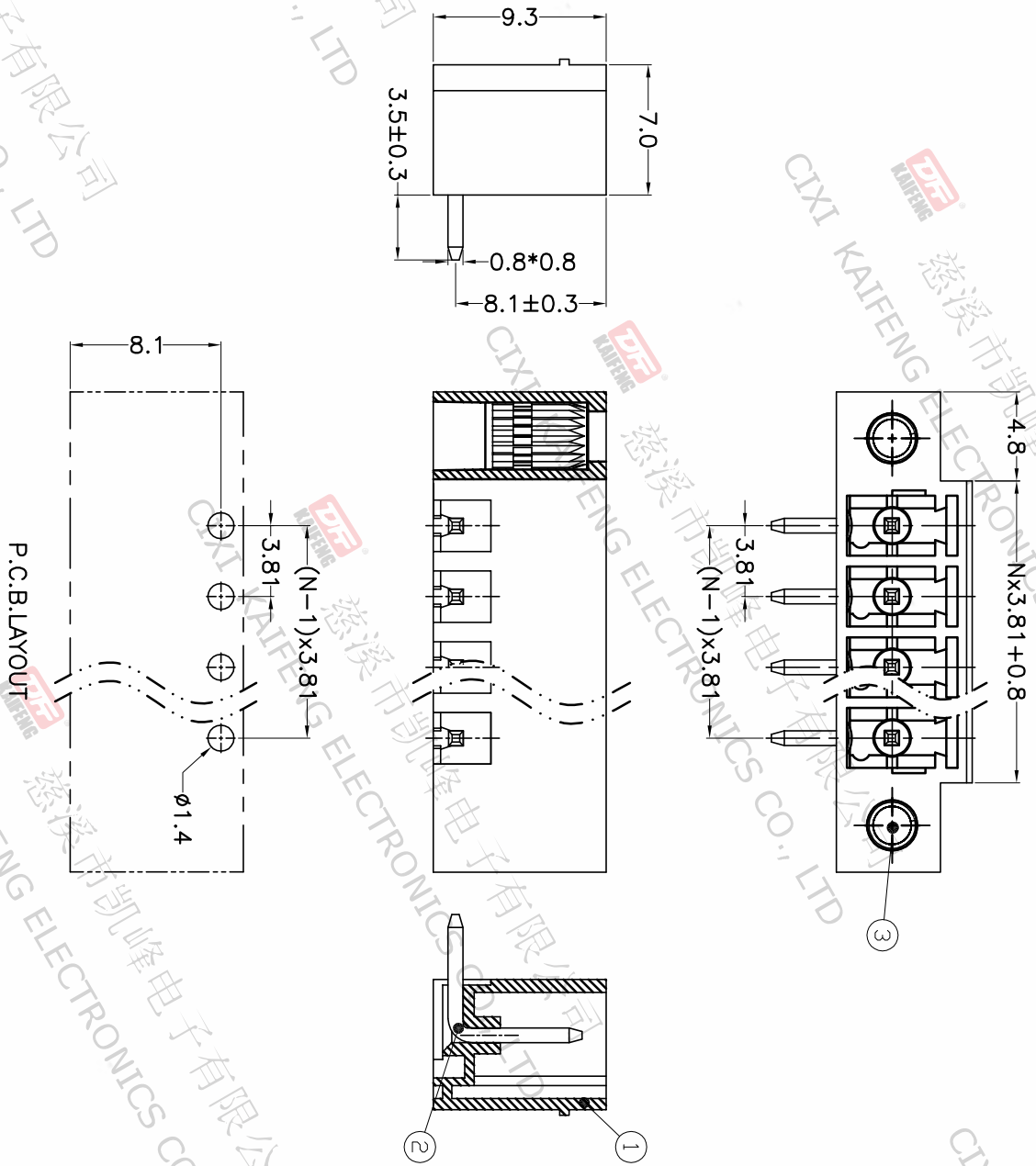
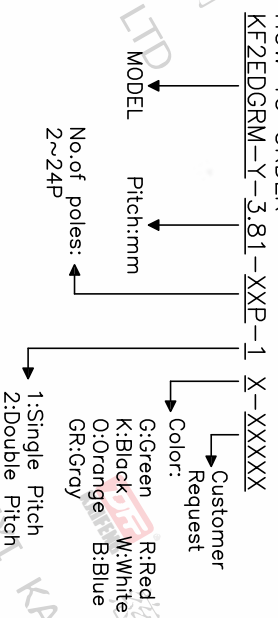


REV.	DESCRIPTION	DATE	DRAFTER	APPROVER
A1	DWG.REL	2020.6.02	ZHANG	JIN

- Material  
 ØHousing : PA66, UL94V-0  
 ØPin header : Copper alloy, Tin plated  
 ØNur : M2.5, Copper alloy
- Electrical  
 UL IEC  
 Rated voltage : 300V 250V  
 Rated current : 8A 7A
- Electrical  
 Contact resistance : 20mΩ(Max)  
 Insulation resistance: 500MΩ/DC500V  
 Withstanding Voltage : AC1500V/1min
- Mechanical  
 Operating temperature: -40°C~+105°C  
 Soldering temperature: 250°C±5/5sec
- RoHS compliance

HOW TO ORDER



P.C.B.LAYOUT

Pitch range	Nominal dimension range	PROJECTION	UNIT
>0	>0	0.1/10	mm
~6	~30		
~10	~60		
~24	~100		
~30	~150		
±0.15	±0.30		±2°
±0.20	±0.50		
±0.30	±0.70		
±1.00	±1.30		

DRAWING TYPE	CUSTOMER DRAWING
SCALE	1:1
SHEET	1 OF 1
DRAWING NO.	W10000752

**DF** 慈溪市凯峰电子有限公司  
 CIXI KAIFENG ELECTRONICS CO.,LTD

TITLE: KF2EDGRM-Y-3.81-XXP-1X  
 SERIES: KF2EDGRM-Y  
 SHEET SIZE: A4