

REV.	DESCRIPTION	DATE	DRAFTER	APPROVER
A1	DWG.REL	2020.5.23	ZHANG	JIN

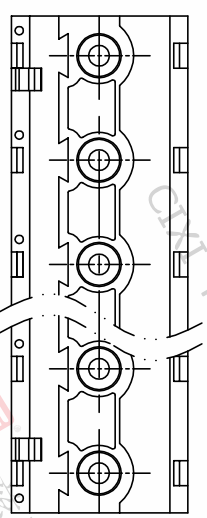
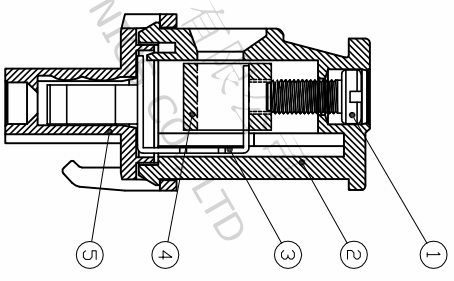
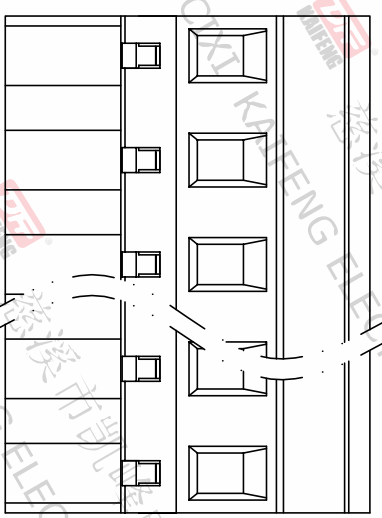
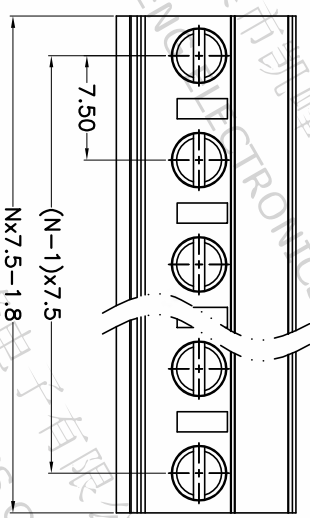
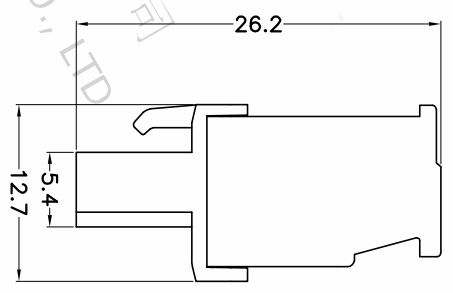
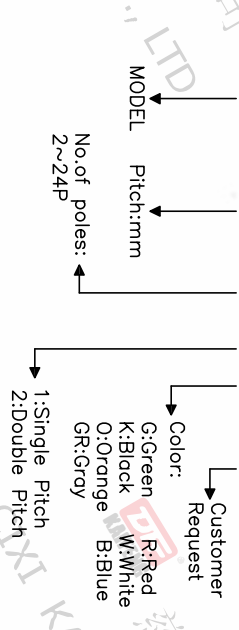
- Material  
 @Screw : M2.5 steel, Zinc plated, \*- slot type  
 @Housing : PA66, UL94V-0  
 @Contact : Copper alloy, Tin plated  
 @Clamp : Copper alloy, Ni plated  
 @Cover : PA66, UL94V-0

- Electrical  
 UL IEC  
 Rated voltage : 300V 400V  
 Rated current : 15A 18A  
 Contact resistance : 20mΩ(Max)  
 Insulation resistance : 500MΩ/DC500V  
 Withstanding Voltage : AC2500V/1min  
 Wire range : 28-12AWG 2.5mm<sup>2</sup>

- Mechanical  
 Operating temperature: -40℃~+105℃  
 Soldering temperature: 250℃±5/5sec  
 Torque: 0.4N.m (3.54Lb.in)  
 Strip length: 7-8mm
- RoHS compliance

HOW TO ORDER

KF2EDGKB-7.5-XXP-1 X-XXXXX



Pitch range	Nominal dimension range	Projection	UNIT
>0	>0	0.1/10	mm
>6	>30	0.1/10	mm
6	~	0.1/10	mm
10	~	0.1/10	mm
24	~	0.1/10	mm
30	~	0.1/10	mm
60	~	0.1/10	mm
100	~	0.1/10	mm
150	~	0.1/10	mm
±2'	±2'	±2'	mm

**DF** 慈溪市凯峰电子有限公司  
CIXI KAIFENG ELECTRONICS CO.,LTD

**PROJECTION** UNIT mm

**SHEET SIZE** A4

**TITLE** KF2EDGKB-7.5-XXP-1X

**SERIES** KF2EDGKB

**DRAWING TYPE** CUSTOMER DRAWING

**SCALE** 1:1

**SHEET** 1 OF 1

**DRAWING NO.** W10000402