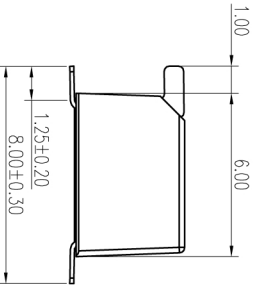
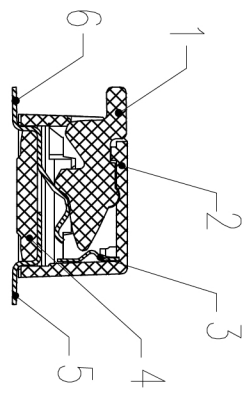
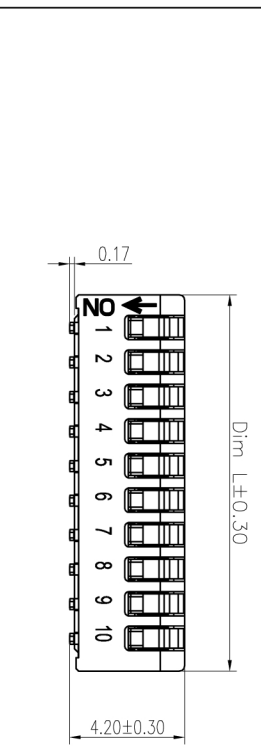
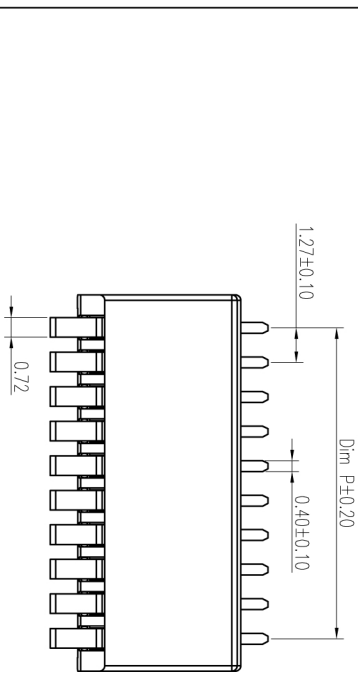
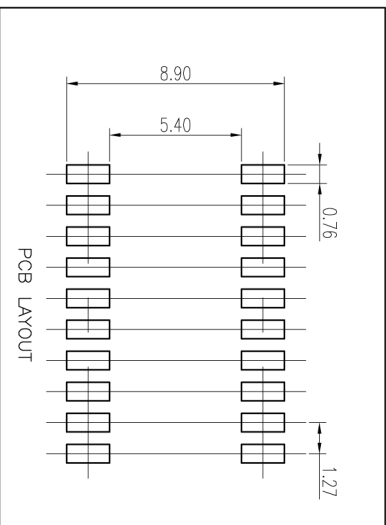


REV	ECN	CONTENT	CHECK	DATE
V0.0		ORIGINAL	ZY	2019.10.11
V1.0		整理图纸	XCN	2020.06.05



SPECIFICATION:

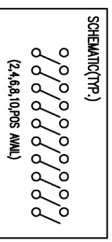
- Rating:
Switching: 25mA, 24VDC
Non-Switching: 100mA, 50VDC
- Contact Resistance:
Initial: 100mΩ max
After life Test: 200mΩ max
- Insulation Resistance: 100MΩ min/100 VDC
- Withstand Voltage: 300VAC for 1 minute
- Operation Force: 800g max
- Mechanical Life: min 2000 cycles
- Operation Temperature: -40°C ~ +85°C
- Storage Temperature: -40°C ~ +85°C
- Rohs Compliance

SOLDERING INFORMATION:

Reflow Soldering: 240°C (20S max), Peak Temperature 260°C,
Manual Soldering: 30W iron, 320±5°C, 3S max
Keep in "off" position during soldering

ITEM	NAME OF PART	NO. OF PART	Q'TY	MATERIAL	NOTE
1	ACTUATOR	\	N	THERMOPLASTIC	UL94V-0
2	HOUSING 1	\	1	THERMOPLASTIC	UL94V-0
3	Spring	\	1	STEEL	\
4	HOUSING 2	\	1	THERMOPLASTIC	UL94V-0
5	PIN 1	\	N	COPPY ALLOY	Au plated
6	PIN 2	\	N	COPPY ALLOY	Au plated

HOW TO ORDER
KF1038 B - XXP - XX - XXXX
 Series No. B: SMD Type
 No. of Pole
 00: tube (without Tape)
 TR: tapereel (with Tape)
 Customer Reques



General tolerance in mm		radii and chamfers		shorter angle side		—		//	
over	to	over	to	over	to	over	to	over	to
0.5	3	0.5	3	10	50	0	100	150	
3	6	3	6	to	to	all	to	150	
6	30	6	30	10	120		100	150	
±0.15	±0.2	±0.25	±0.3	±0.5	±0.8	±1.0	±1*	±30'	±20'

Poles	Dim P	Dim L
2P	1.27	3.68
4P	3.81	6.22
6P	6.35	8.76
8P	8.89	11.30
10P	11.43	13.84

APP.	DATE	NAME	DWGNO.	W20000082			
CHK.	DATE						
DWG.	DATE						
UNITS	MM	SCALE	1:1	SHEET	1/1	PROJECTION-METHOD	⊕

DFE 慈溪市凯峰电子有限公司
 CIXI KAIFENG ELECTRONICS CO., LTD