

REV.	DESCRIPTION	DATE	DRAFTER	APPROVER
A1	DWG.REL	2020.06.10	DENG	JIN

• Material

- ①Housing: PA66, UL94V-0
- ②Plastic cover: PA66, UL94V-0
- ③Clip: Copper alloy, Silver plating.
- ④Reed:Stainless steel

• Electrical

UL IEC  
 Rated Voltage: 300V 630V  
 Rated Current: 15A 16A  
 Contact Resistance: 20mΩ  
 Insulation Resistance: 500MΩ/DC500V  
 Withstanding Voltage: AC1500V/1Min  
 Wire range: 28-12AWG 0.2-2.5mm<sup>2</sup>

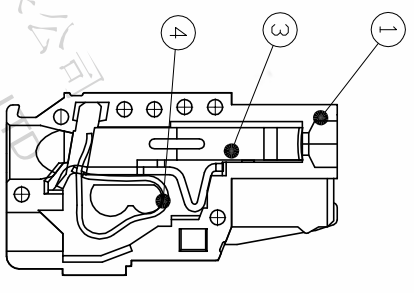
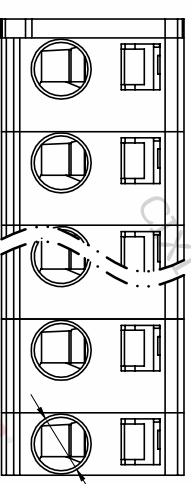
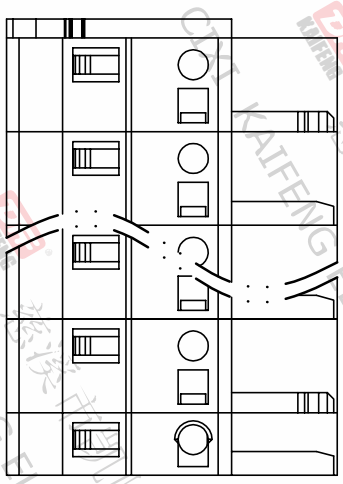
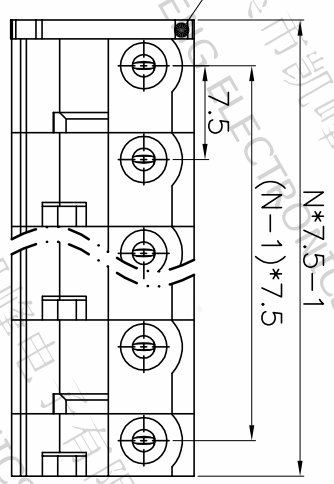
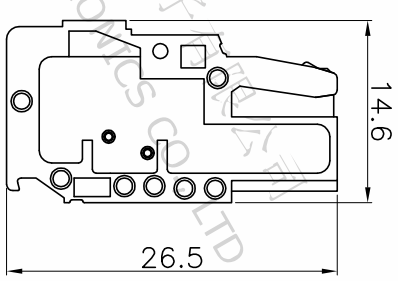
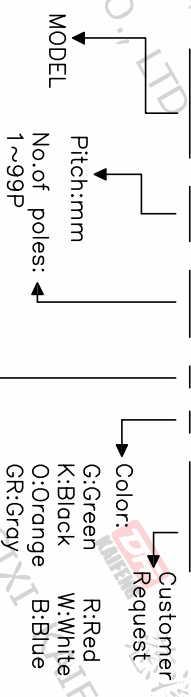
• Mechanical

Temperature Range: -30℃~+105℃  
 MAX Soldering: +250℃,(5 Seconds)

• RoHS compliance

HOW TO ORDER

KF475-7.5-XXP-1 X-XXXXX



Pitch range	Nominal dimension range	0.1/10	±2°
>0	>30	0.1/10	±2°
~6	~30	0.1/10	±2°
~10	~60	0.1/10	±2°
~24	~100	0.1/10	±2°
~30	~150	0.1/10	±2°
±0.15	±0.30	±0.50	±1.30

DRAWING TYPE	CUSTOMER DRAWING
SCALE	1:1
SHEET	1 OF 1
DRAWING NO.	W16000122
PROJECTION	TITLE
UNIT	KF475-7.5-XXP-1X
SHEET SIZE	A4
SERIES	KF475

**DF** 慈溪市凯峰电子有限公司  
 CIXI KAIFENG ELECTRONICS CO.,LTD